

Ethel Tucker Centennial Park Play Space

What We Heard Report

February 2022





Ethel Tucker Centennial Park Play Space We Heard Report

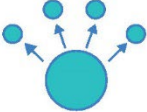


Through targeted engagement with the Arts and Learning Campus partner and project stakeholders that occurred in March 2021, the selection of the theme for the development of the concept plan was determined. It was identified that the Town should provide a play area that incorporates an art, nature and challenge themed play space.

Town residents were invited to provide input on Ethel Tucker Centennial Park play space project through an online survey by selecting one of two animal choices and associated narratives to support the concept. The survey launched on February 1 and closed on February 15.

Administration would like to thank everyone who participated. Community engagement and involvement is a priority for the Town and the survey responses have helped us determined the next steps of the Ethel Tucker Centennial Park play space project.

Public Participation – What Stage?

The Ethel Tucker Centennial Parks engagement was at the **Consult** level.

	INFORM	CONSULT	INVOLVE
GOAL	<p>To provide balanced and objective information in a timely manner.</p> 	<p>To obtain feedback on analysis, issues, alternatives, and decisions.</p> 	<p>To work with public to make sure concerns and aspirations are understood and considered.</p> 

This report contains the survey results summary and responses; a total of 267 people provided their preference for the design of the upgrade. The results of the survey have indicated that, out of the two design options provided, design 2 (“The Buffalo”) received the most support. Of the 267 respondents, 70.79% selected option 2 and 29.21% selected option 1 (“The Ground Squirrel”).

Survey Results

Please review the following two designs.

Design 1: The Ground Squirrel (click play button to hear the story of the ground squirrel)

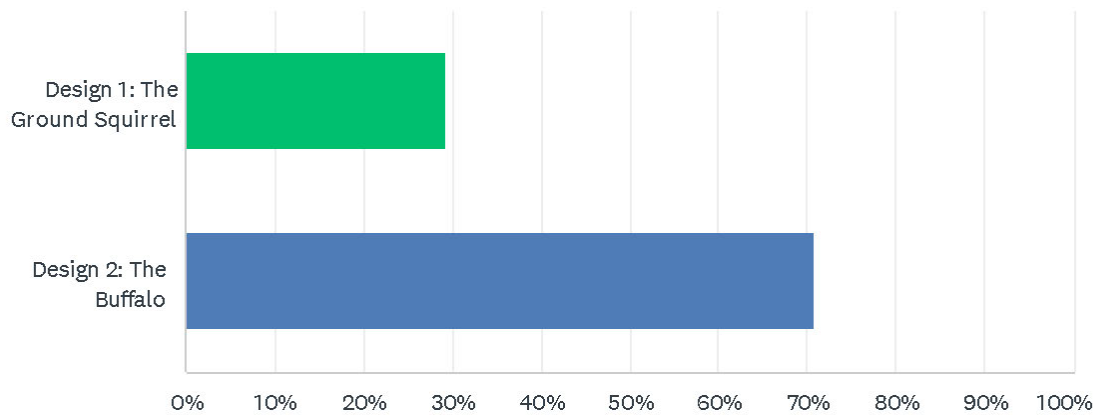
Description: In order to celebrate the ancient story of Napi and the Ohkotok, the playable art piece proposed by the designers imagines a time long before the Ohkotok Rock chased Napi through the foothills, crushing the ground squirrels who attempted to help Napi and reducing their size in the process. A wooden, climbable sculpture will depict the ground squirrel as tall, careless and playful as it used to be before being shrunk down to the small size we know it to be today. The ground squirrel will be a celebration of peace, allowing children and their families to approach and engage in playful activities with him.

Design 2: The Buffalo (click play button to hear the story of the buffalo)

Description: As a celebration of the wild buffalo that once freely roamed the Foothills region, the new play space will include a combined wood-and-boulder piece that will portray the buffalo featured in the ancient story of Napi and the Ohkotok. The buffalo was one of several beings that agreed to help Napi in stopping the large rock from chasing him. While the buffalo was unsuccessful in stopping the Ohkotok, the valor and strength it embodies in the story will be displayed here as a large wood sculpture butting its head against a large boulder, representing the confrontation between the buffalo and the Ohkotok.

Select your preference below (note that the designs of each concept are the same other than the animal depicted in each above-shown option).

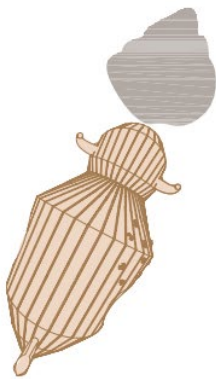
With this direction confirmed, the play space at Ethel Tucker Centennial Park will be constructed with design option 2 (“The Buffalo”), in mind later this year. The design was created by the Town’s consultant with support and input from Indigenous partners, advisors and artists as we all as a descendant of Okotoks historical figure Ethel Tucker and thoughtfully incorporates the historical significance of our area.



ANSWER CHOICES	RESPONSES	
Design 1: The Ground Squirrel	29.21%	78
Design 2: The Buffalo	70.79%	189
Total Respondents: 267		

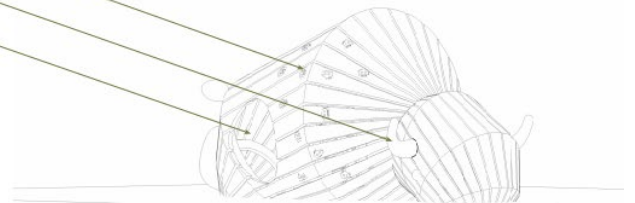
Preferred Design Option

Buffalo Animal Sculpture Plan View

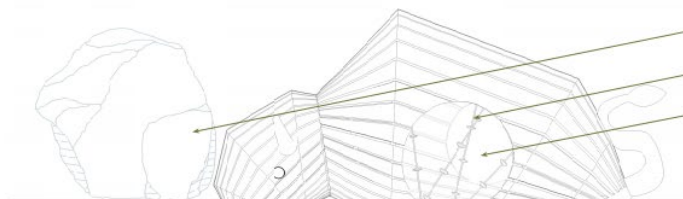


Climbing Holds
Wood-Carved Tail and Horns
Hole Cut-Out Entrance

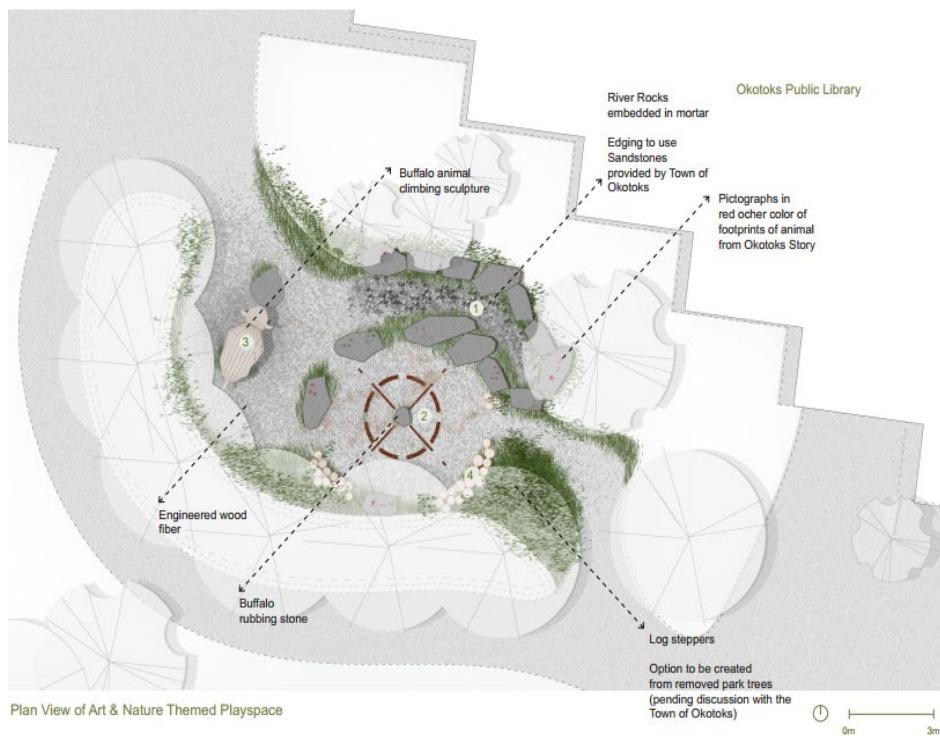
Buffalo Animal Sculpture Perspective View



Buffalo Animal Sculpture Section View



Large Boulder
Climbing Ropes
Side Entrance



1. Rock Garden/
Playful Swale



2. Story Telling
Space with
Blackfoot
landmarks



3. Example of
Animal Climbing
Sculpture
(Design by
Monstrum)



4. Climbing/Sitting
Steppers