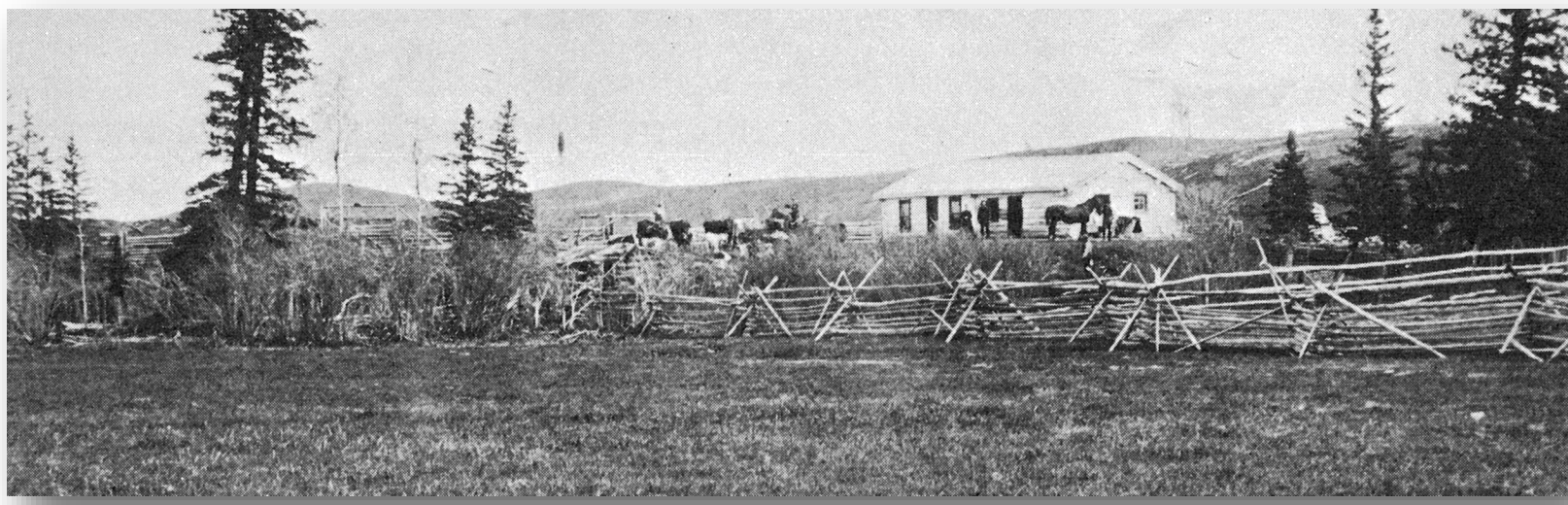


FORGOTTEN FOOTHILLS

TRACES OF PLACES OF THE PAST



John Quirk's Q Ranch.

Kew

John Quirk established the Q Ranch on the north fork of Sheep Creek in 1882. His brands were JQ and Q. Soon, more settlers began arriving in the district — one of the most famous residents of Kew was John Ware who established his ranch (with its 9999 brand) in 1896 along the north fork of Sheep Creek.

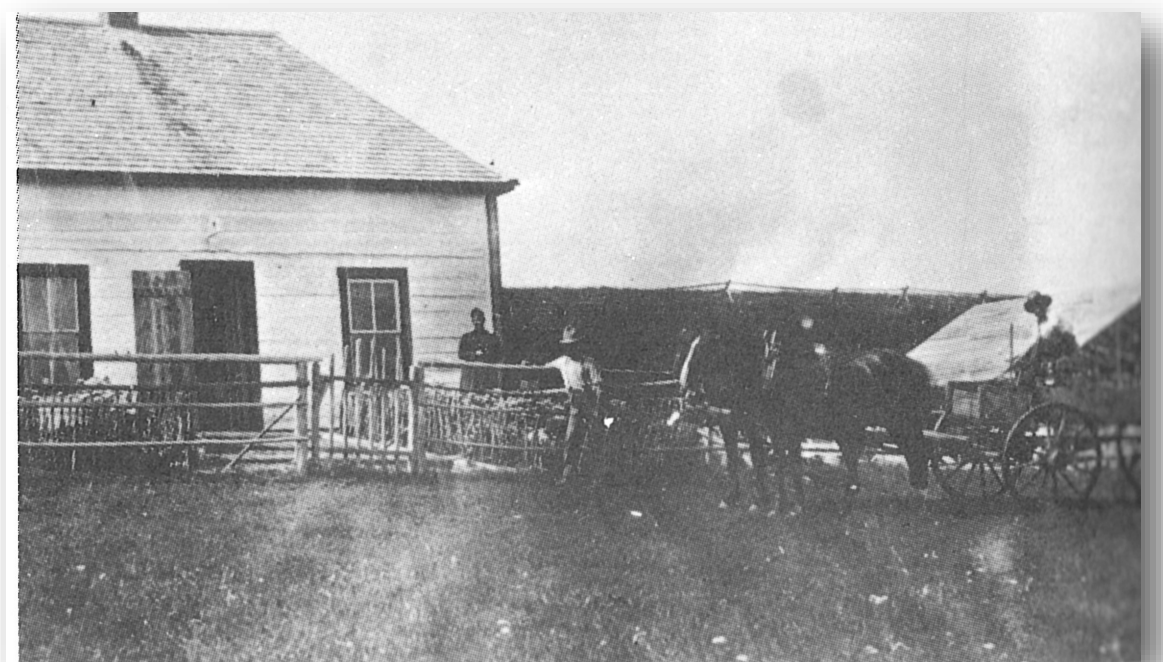
In 1908, a post office opened and it was phonetically named Kew after the Q ranch. The first post office was located at the ranch of George Bell, (NW-30-20-3 W5). Soon a store opened in conjunction with the post office. In 1910 a one-room school opened and, despite its location in the picturesque rolling Foothills, the school was named 'Plainview School.' A community hall was also built and became a busy hub for dances and events enjoyed by local residents.

Plainview School closed in 1950 and the Kew Community Hall was relocated, also in 1950, to the Square Butte district further west where it continues to be used today. The Kew Post Office closed in 1955.

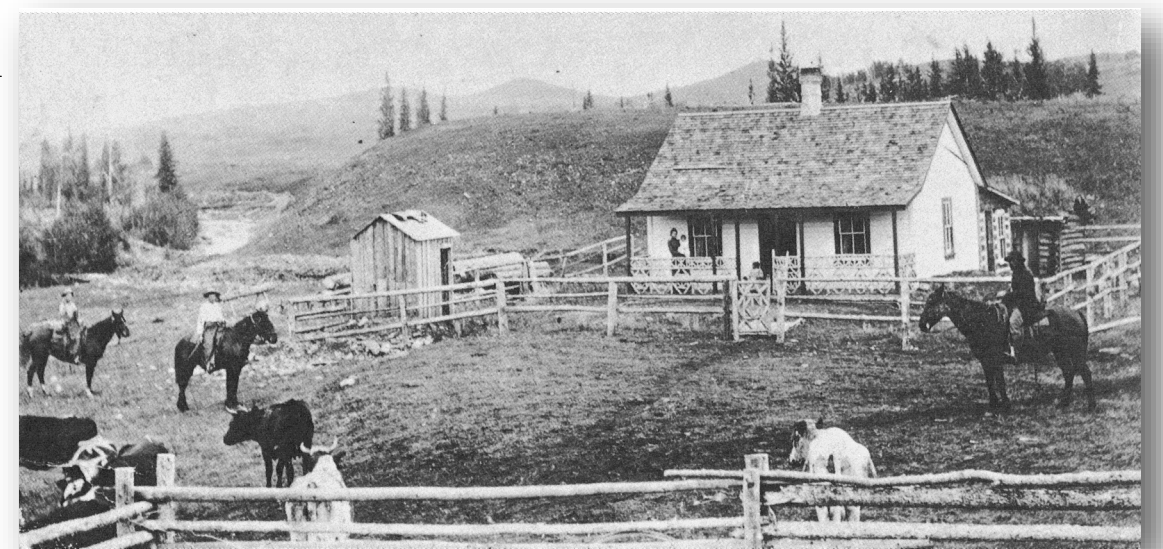
A cairn honouring former Kew pioneer John Ware was dedicated on May 30, 1970 near his original homestead. People came from as far away as Vancouver for the ceremony. A number of dignitaries also attended, including Lieutenant

Governor Grant MacEwan who was the guest speaker. The Ware Cairn is located on private land.

Source: "Our Foothills—Priddis, Kew, Millarville".



George Bell's Belvoir Ranch, the first Kew post office.



John Ware's ranch at Kew, 1896. Mrs. Ware is on the porch with Nettie and Robert. John is on horseback at right.



Unveiling the Ware cairn at Kew, 1970.

Kew Land Office
If interested in securing good pasturage in the hills or dairy on ranching propositions come to Kew Store and we can sell you any or all the lands now on the market. We have it listed from \$12 to \$30 per acre and can fully satisfy your wants in lands in this district.
HODGKIN BROS.
KEW P.O., STORE

Kew ad in Okotoks Review, 1919