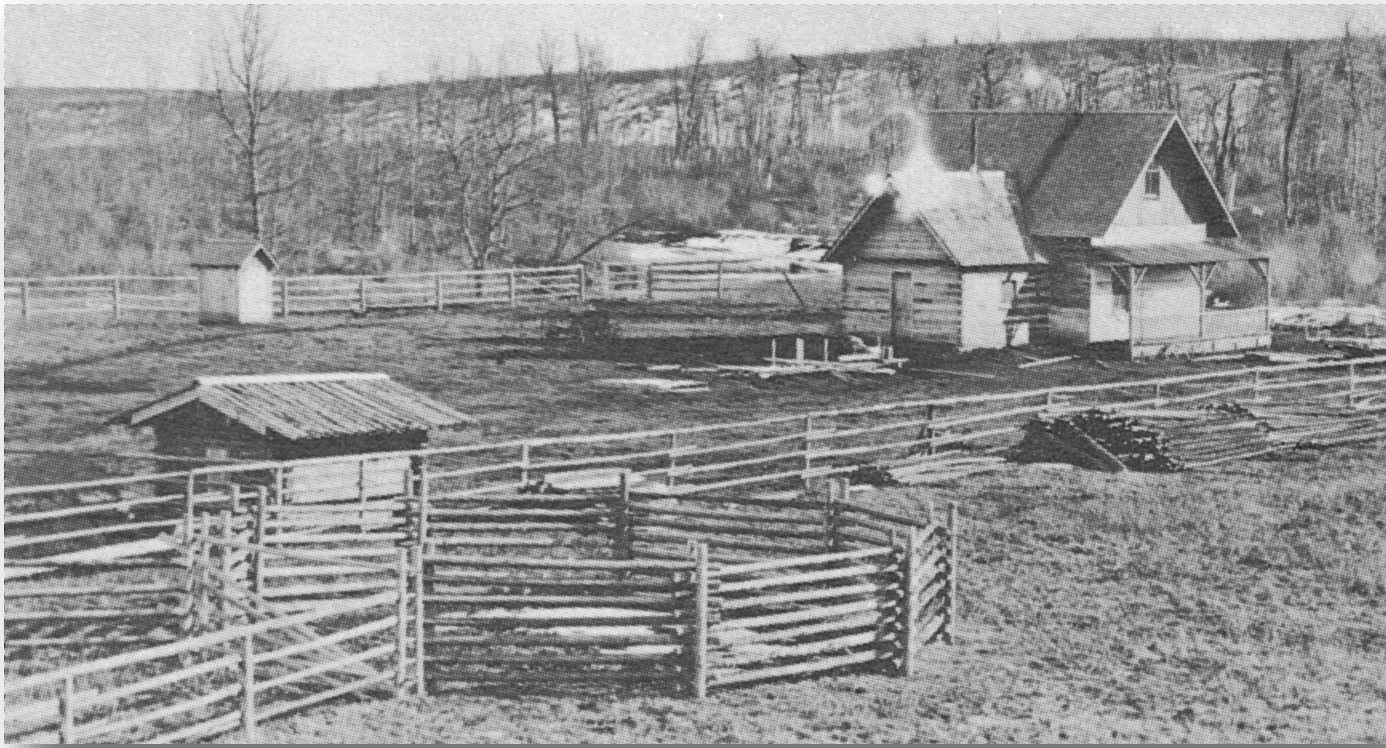
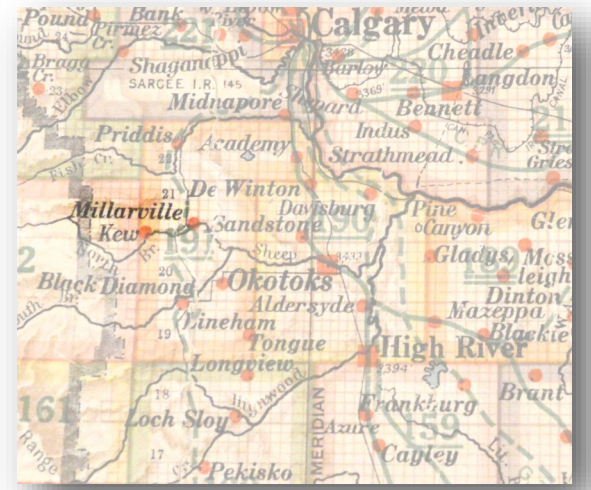


PLACE NAMES OF THE FOOTHILLS



Malcolm Millar's ranch was the first Millarville Post Office, 1892.

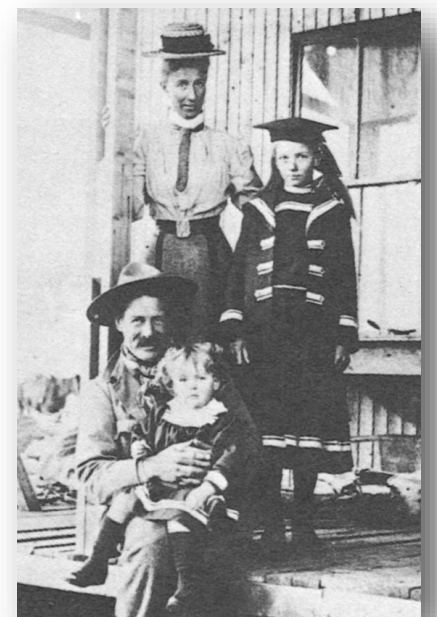


Christ Church, Millarville,

Millarville

Millarville is named after Malcolm Millar who, in 1886, homesteaded on the SE12-21-3 W5, later pre-empting NW12-21-3 W 5 and purchasing other land. There he established the first trading post in the district. A Mounted Police detachment was also stationed at the Millar ranch in 1889. In April, 1892, the post office was named Millarville and he was sworn in as postmaster, which he held until 1911.

Ranchers' Hall opened at Millarville in 1897. Christ Church, Millarville was opened in 1896, several miles east of the Millarville hamlet. It was built on five acres of land donated by Rev. R.M. Webb-Peploe. It is still in use today.



Malcolm Millar, seated, with family.

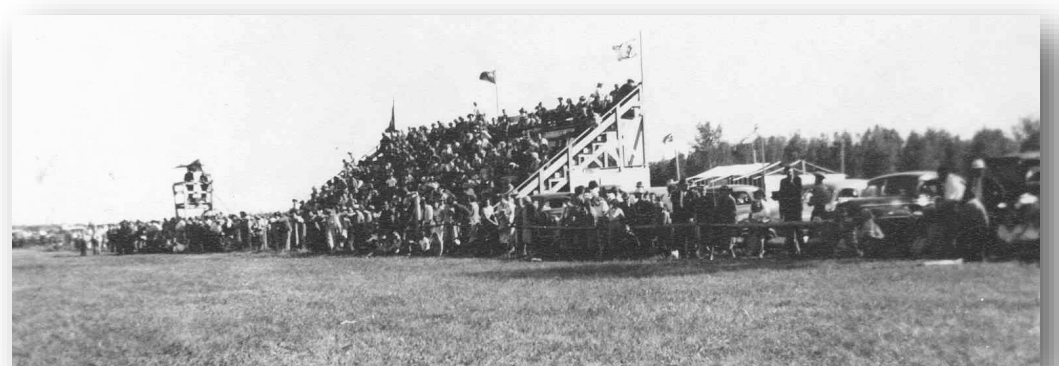
Children attended one-room schools including Fordville, Ballyhamage, Square Butte, New Valley and Sheep Creek School. The second Sheep Creek School, a two-room school, was built in the 1940s and then it was moved into the hamlet of Millarville in 1950, expanded, and renamed Millarville School.

Today, Millarville is well known for its farmers market, horse races and agricultural fair; the latter two have been annual traditions for over a century.



Red line is the early hamlet borders. Green is current boundaries.

Sources: *Our Foothills history book*; and *County of Foothills*.



Millarville Race Track, 1950s.