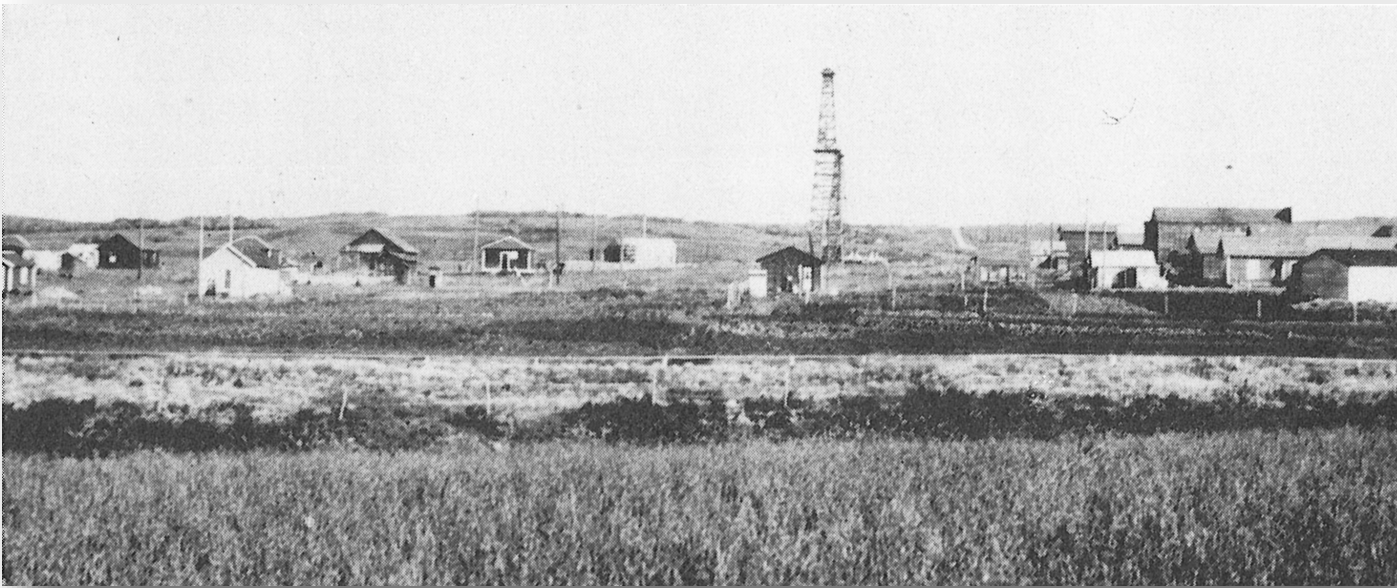
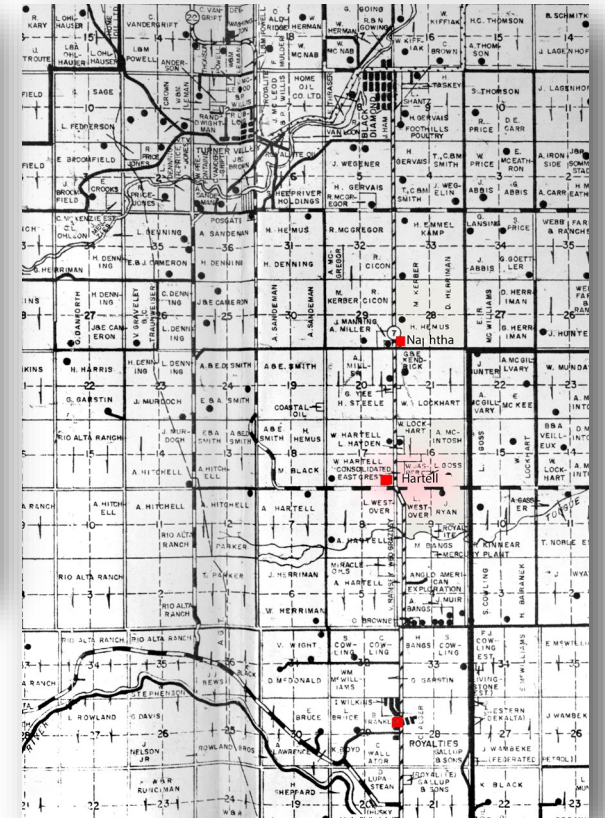


PLACE NAMES OF THE FOOTHILLS



Hamlet of Hartell, circa 1930s.



Hartell

Hartell is an incorporated hamlet located at the intersection of Highway 22 and Highway 543 south of Black Diamond.

The community gets its name from F. J. Hartell who came to the district in 1918. He owned most of the land at that intersection and for years the corner was known as the Hartell corner.

In the spring of 1929, F. J. Hartell put an advertisement in the paper offering a free lot of land to anyone who would start a store and get a post office running. Ed Thompson, who had just quit his job at a bank, took up this offer and became the first storekeeper and postmaster in 1930. In 1934, 10 acres were divided into lots to accommodate newcomers.

With the flurry of drilling in the region, numerous businesses opened in Hartell including a lumber yard, pool room, drug store, rooming houses, restaurants, men's clothing store, confectionery, butcher's shop and garage.

In 1944, Hartell suffered a devastating fire which destroyed a garage, service station, homes, the Upper Tongue Creek Church and a bridge to the east.

When the Mercury Plant closed in 1960, workers moved away and businesses soon closed. The post office closed in 1971, but the store operated for a few more years.



The former post office & store building, 2019.



Hamlet of Hartell today.

Sources: *Tales and Trails by the East*
Longview Historical Society, and County of
Foothills.