

# Okotoks Business Park

## Outline Plan for

N.W.1/4 SEC.22-20-29-4  
 LOT 4, BLOCK 1, PLAN 081 0603,  
 LOT 30MR, BLOCK 1, PLAN 801 0201,  
 LOT 11MR, BLOCK 3, PLAN 801 0201,  
 LOT 13MR, BLOCK 4, PLAN 801 0201,  
 LOT 7MR, BLOCK 5, PLAN 801 0201,  
 CLOSED ROAD ON PLANS 801 0201 & 881 0012,  
 AND

ROAD ALLOWANCE ADJACENT TO S.W.1/4  
 SEC.27-20-29-4thm as described in Bylaw 30-08

Prepared for Town of Okotoks

### Outline Plan Statistics

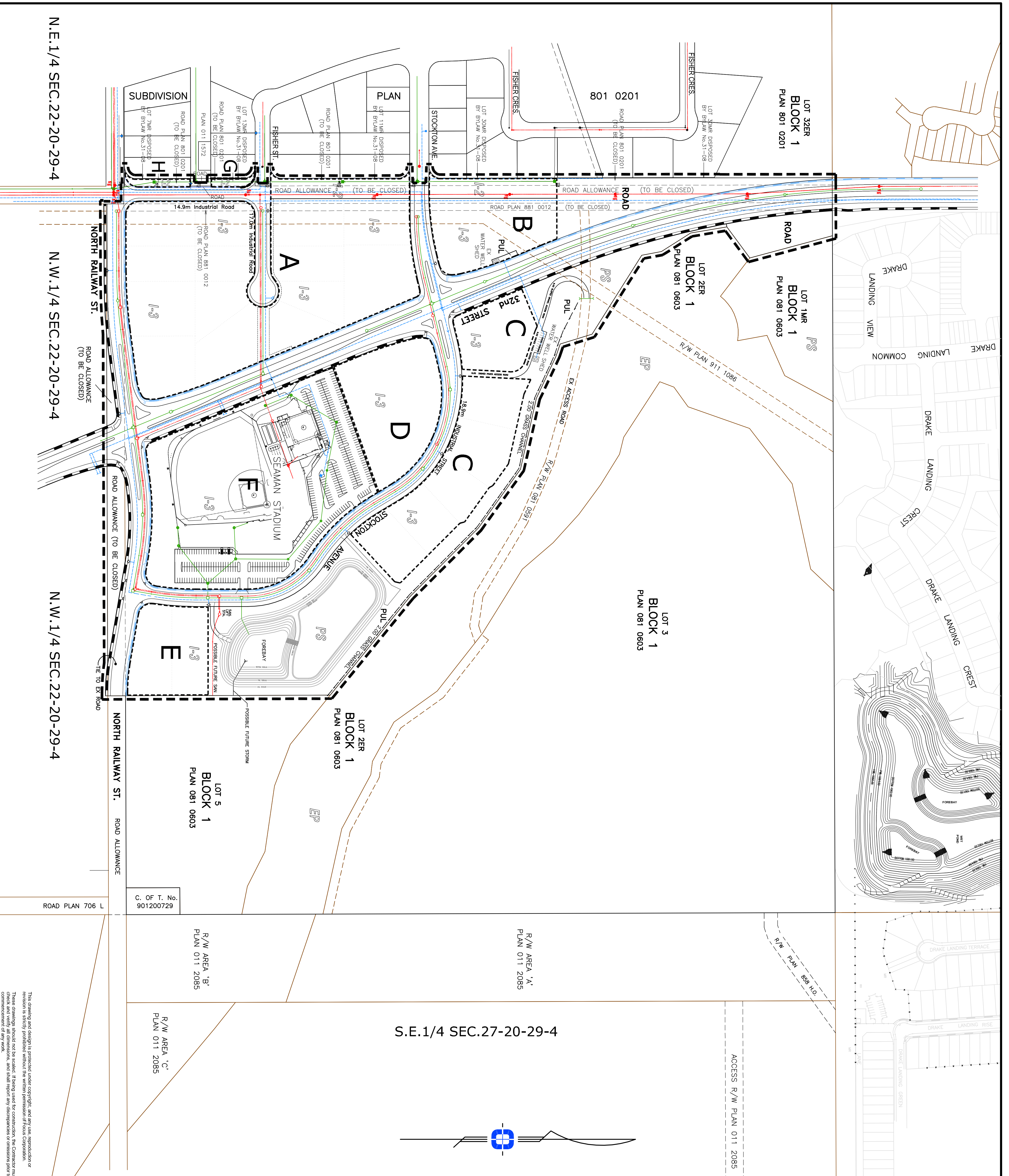
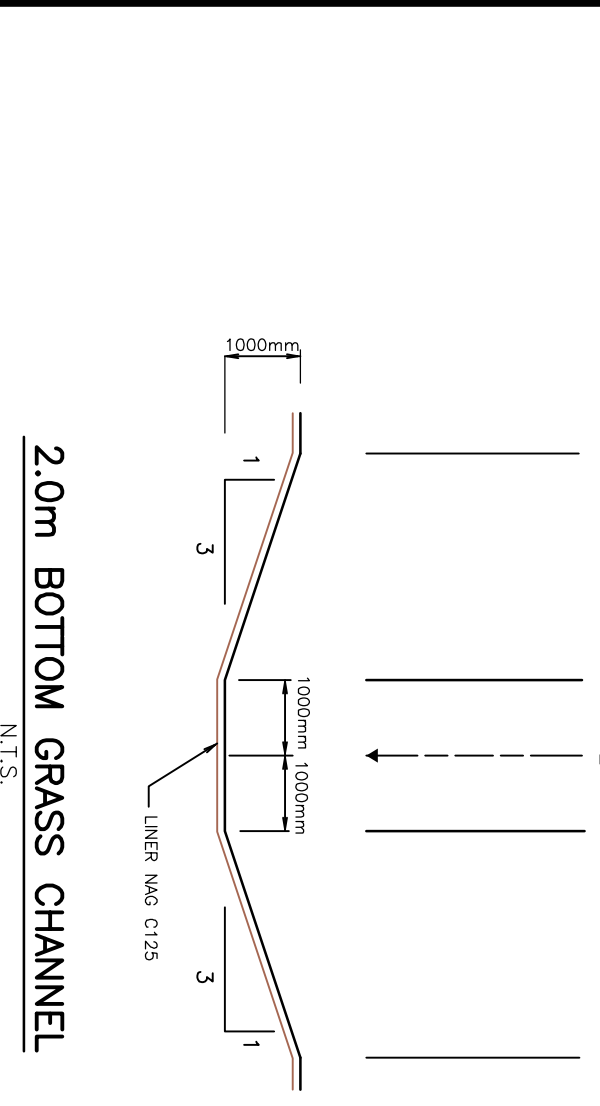
Area Outlined: 28.91 ha 71.43 ac.

Parcel Area Outlined	Area
Area A	5.86 ha 14.48 ac.
Area B	1.96 ha 3.36 ac.
Area C	2.49 ha 6.15 ac.
Area D	1.41 ha 3.48 ac.
Area E	0.89 ha 2.20 ac.
Area F	4.63 ha 11.44 ac.
Area G	0.05 ha 0.12 ac.
Area H	0.08 ha 0.20 ac.
Remainder	1.04 ha 2.59 ac.
<b>Total</b>	<b>17.19 ha 42.47 ac.</b>

### Public Areas

Roads	7.78 ha 19.22 ac.
PUL	3.94 ha 9.74 ac.
<b>Total</b>	<b>11.72 ha 28.96 ac.</b>

Legend	Description
	2.50m REGIONAL PATHWAY
	1.40m SEPARATE WALK
	WATER
	SANITARY
	STORM



Revision	Descriptions	Date
1	Revisions as per Town's comments	June 24, 2009
2	17m Industrial Road within Area 'A'	May 27, 2009
	NEW	May 12, 2009

FOCUS SURVERS, LIMITED PARTNERSHIP  
 #100, 613 58TH STREET SE  
 CALGARY, ALBERTA T2H 1T9  
 FILE NO.: 15085-111

SCALE: 1:2000  
 DRAWN: J.Y.  
 CHECKED: P.S.

This drawing and design is prepared under copyright and any use, reproduction or revision is strictly prohibited without the written permission of Focus Corporation. These drawings should not be relied upon for construction. The Contractor must check and verify all dimensions, and shall report any discrepancies or omissions prior to commencement of any work.